

Certificate of Warranty

Product	Echo Hydrogen-Rich Water Purifier		Model	Echo NHM-130
Date Purchased		Serial Number		
Warranty Period	10 years			
Vendor	Synergy Science, Inc/Echo Water			
Customer	Name			
	Address			
	Tel			

- ※ This product is an electronic consumer appliance used in purifying drinking water.
- ※ This device has been tested and certified by all appropriate regulatory agencies
- ※ Any malfunction or failure of any and parts during warranty period will be repaired free and if any parts or entire device is un-repairable, the device will be replace free of charge
- ※ Warranty will apply to all parts and labor except following conditions
 - 1) Malfunction or failure occurring after the warranty period.
 - 2) Malfunction or damage caused by consumer's intentional misuse.
 - 3) Repairs or service performed by unauthorized service center.
 - 4) Improper power supply and attaching unauthorized device.
 - 5) Physical damage to machine.
- ※ When products are used for commercial purposes.
- ※ The warranty period shall commence from the date of product purchase, but when the date of purchase can't be determined, the warranty period shall be commencing from 3 months after the product is manufactured.



Echo NHM-130 Hydrogen-Rich Water Purifier

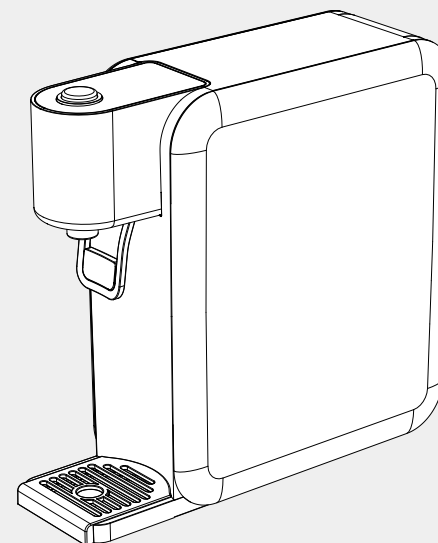
Owner's Manual

Precautions for Safe Use

- For the safer use of a product, please make sure to read the following notes carefully.

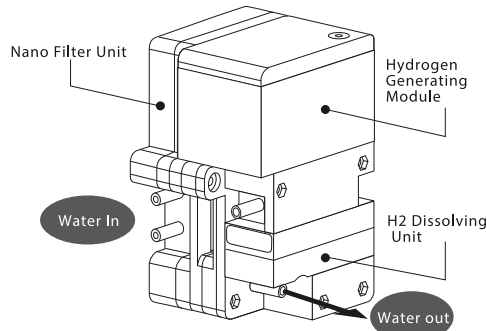
Contents

• The characteristic of H2 Maker	1
• Notices for Safety	2
• Names of Part and Functions	5
• Product Configuration	6
• How to Install Before Use	7
• How to Install	8
• How to Use	11
• How to replace filter	12
• Filter Configuration	14
• Trouble Shooting Chart	15
• Specifications	16

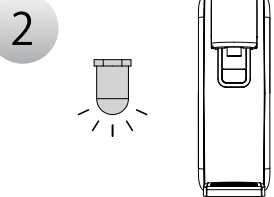


• The characteristic of Hydrogen-Rich Water Purifier

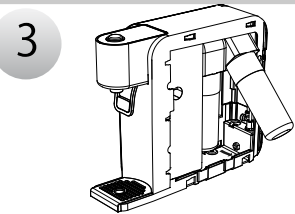
1 Generation of High-Concentrated Hydrogen-Rich Water



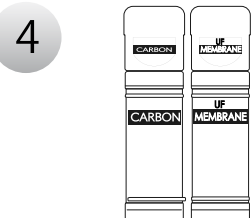
. With system control from automatic control program, hydrogen water with more than a certain concentration is always provided by controlling generation of hydrogen, dissolution timing, concentration control of hydrogen water etc. (At present, regular concentration of hydrogen (DH) based on sample device: DH 1,000~1,300 ppb) (Unit to product Hydrogen-reduced water with the function of controlling concentration of dissolved hydrogen: Invention patent).



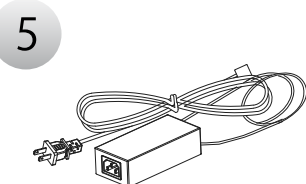
Slim and Compact Design with LED Lightning



Easy Filter Replacement



NSF/ANSI 42 Recognized Filter Material



Adoption DC 12V for Safety

! Precautions for Safe Use.

※ Before using a product, please make sure to read "Precautions for Safe Use" carefully and use it appropriately.

. After reading, please keep it in a place where anyone can see at any time.

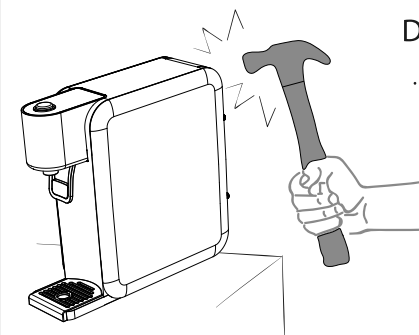
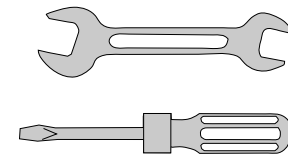
. Appearance may be subject to change without notice in order to improve the quality of a product.

	WARNING	In the event that serious injury or death may occur in violation of instructions given.
	CAUTION	In the event that minor injury or product damage in violation of instructions given.
	These graphical figures are symbols for calling a user's attention to anything and operation which might cause a hazard.	
	For the part with these symbols, please read it carefully and follow the instructions to avoid a hazard that may occur.	
	When using your appliance, always follow basic precautions, including the following.	

! WARNING

Do not attempt to disassemble or operate the device on your own.

. It may cause product damage.



Do not damage product.

. Doing so may causes injury or product damage.

• Precautions for Safe Use



WARNING



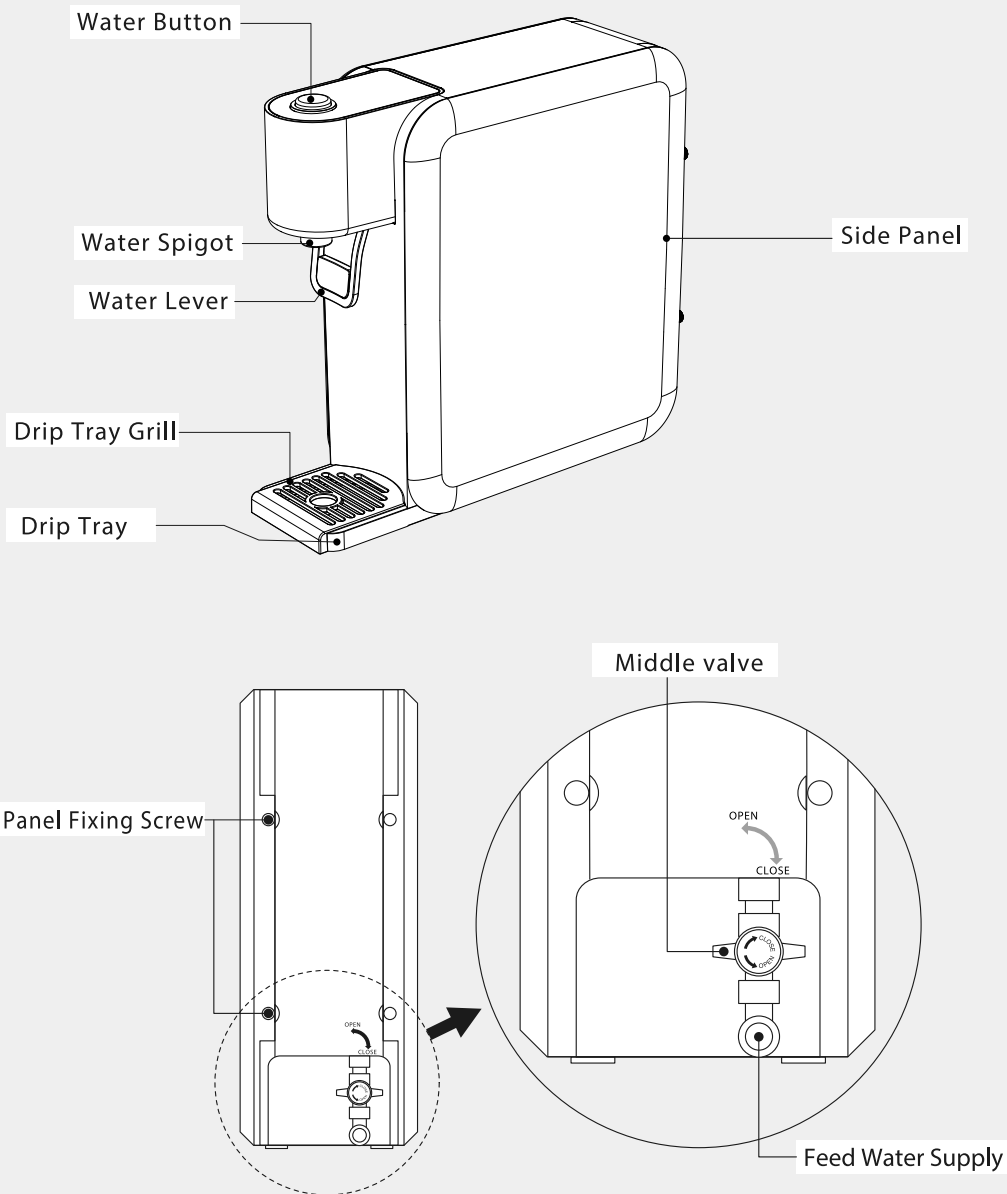
CAUTION

 WARNING	For residential and light commercial use only. Do not use this appliance for other than the intended use.
	Check with your state and local public works department for plumbing and sanitation code.
	Do not install where the temperature and humidity are high.
	Do not grasp dispensing valve, when moving machine.
	Do not place anything on the top of machine.
	Do not wipe with thinners, benzene, Alcohol etc.
	Please use it in a safe place with no slope.
	Do not connect to Hot water pipe line, only cold water tap line.
	Do not hang or climb on the unit, as this may cause the unit to fall.
	Do not moving machine when operating.
	Avoid installing the unit where it could be exposed to water or moisture, other heating system.
	Make sure the system is plugged into a live 110-240V AC outlet.

• Precautions for Safe Use

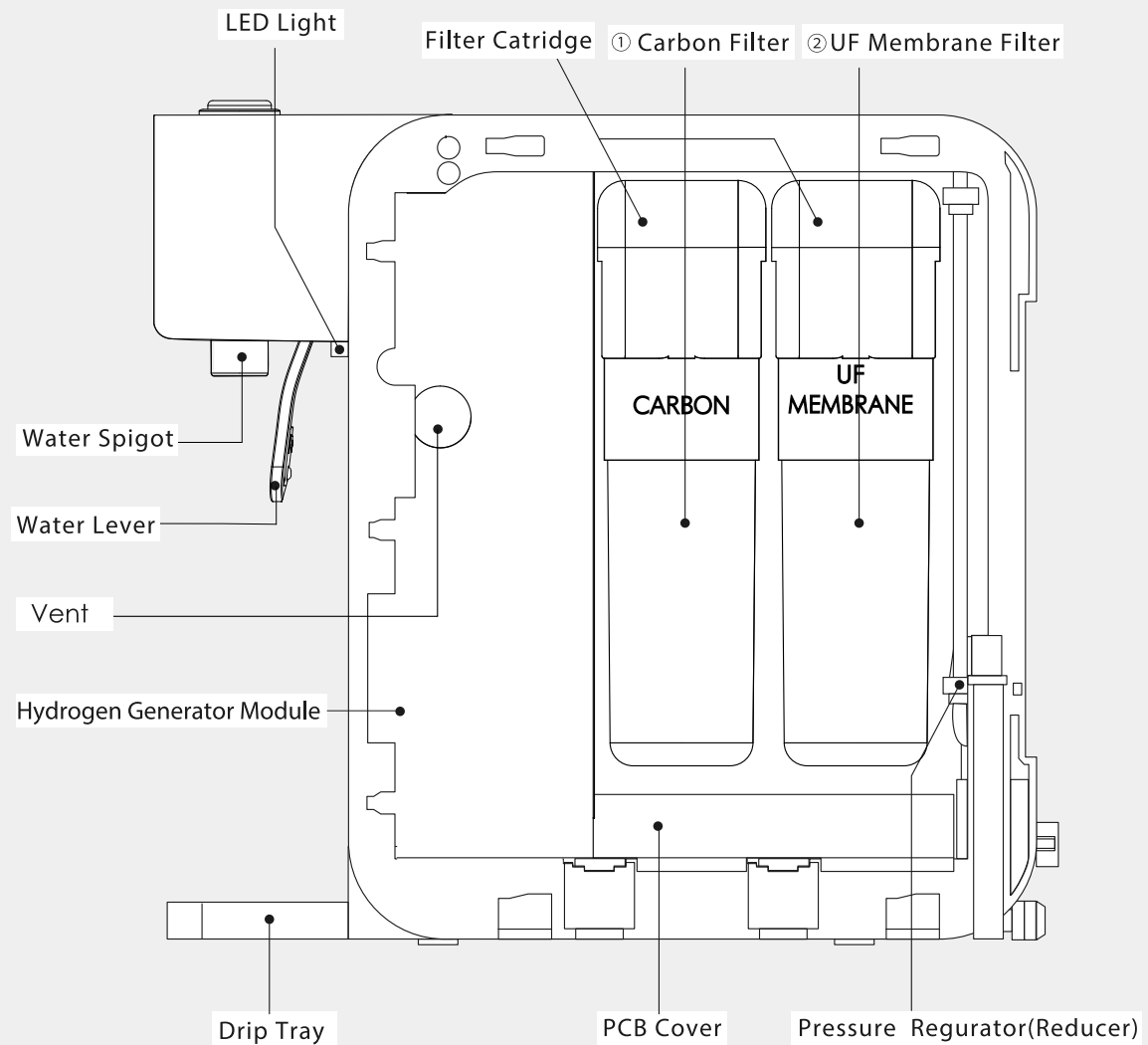
 CAUTION	If the main body falls in the water or water leak from inside of cabinet, immediately disconnect the plug and then take it out of water.
	When the unit is not in use for a long period of time, please unplug the unit from the outlet and shut off supply valve.
 WARNING	Make sure filter replacement time.
	Connect only to a cold water supply.
	Make sure not exceed 3 meter water tubing hose from cold water supply and do not pull down tubing line when
	If machine has not been used for long time, run water through it for 5 minutes or 10 liters over.
	Use only factory authorized filters.
 CAUTION	Filters should be replaced on schedule and do not change filter set position arbitrarily.
	Use only factory authorized replacement parts. -May cause leakage of water. (Tubing, middle valve, fitting , filters)
	Before unit and filter waste disposal, please should comply with the rules.
	The warranty period shall commence from the date of product purchase and Malfunction or damage caused by manufacturer, The Limited warranty does not cover.
	- Any Echo water purifier that has been subjected to any use that is different than or inconsistent with the use instructions in the Echo water purifier Owner's Manual.
	- Any Echo water purifier that has been subjected to any abuse, accident, physical damage , improper installation or application, alternation, neglect, improper temperature humidity or other environmental conditions including but not limited to lightning, flood or fire.
 CAUTION	- Any Echo water purifier that has been damaged due to improper repair, modification, alternation, or maintenance by anyone other than an authorized service warranty representative of Echo Water System.

- Name of each part of the unit



- Product Configuration

Inside Structure

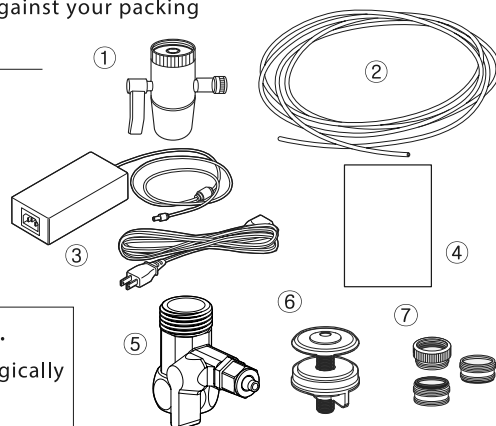


• How to install before use

- Package content

Please check the components received against your packing slip to make sure you have all the parts.

- ① Diverter
- ② Tubing 3m (1/4")
- ③ Electric Adapter and plug (AC100~240V, DC 12V 5A)
- ④ Owner's Manual
- ⑤ Adapter valve
- ⑥ Tube outlet deco
- ⑦ Diverter adapters



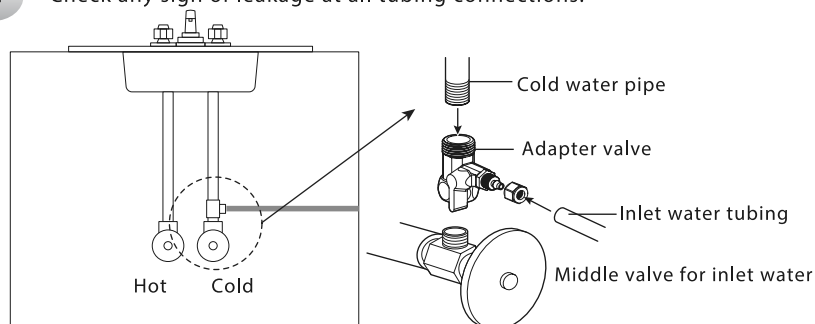
Please check feed water sources.

- Do not use the system on microbiologically unsafe drinking water from non-portable water sources.

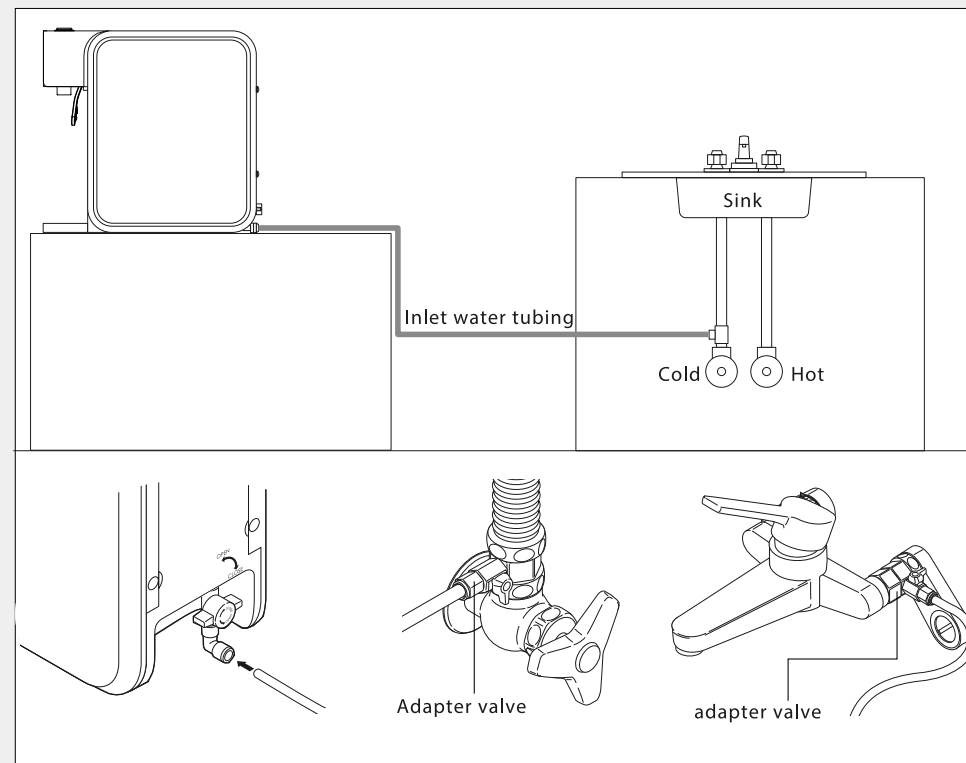
- Install Stop Adapter Valve

A typical connection using the included adapter valve is shown in the illustration below.

- 1 Connect diverter for water supply to cold water pipe and inhale water up to 1/4inch.
 - Caution
 - Please be sure to turn off adapter valve.
 - Please be sure to connect to a cold water pipe.
- 2 Firmly push the inlet water tubing onto water inlet collar respectively not to escape. Screw nuts onto the diverter.
- Caution . Install a tubing in a correct position.
- 3 Turn on the adapter valve.
- 4 Check any sign of leakage at all tubing connections.



• How to install



※ For the first time use, please press and hold dispenser and flush 10 liters water over.



Precaution for safe installation

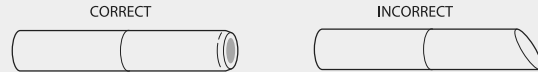
1. Do not use warm or hot water, as may this damage the machine.
2. Please be sure to turn off adapter valve when connecting water supply.
3. Check for any signs of leakage at the diverter and at all tubing connections.
4. Check the tubing line is all straight position.
5. Do not use let power cord hangover the edge of table or counter, or touch hot surfaces.
6. Do not operate machine before finishing installation work.
7. Do not install it where the temperature and humidity are high. Keep it in a place it may not be adversely affected by temperature, sunlight, dust, salt, sulfur content, etc.
8. Do not install it where the temperature and humidity are high. Keep it in a place it may not be adversely affected by temperature, sunlight, dust, salt, sulfur content, etc.

• How to install

Making Tubing Connections

(Tubing is not performance - tested or certified by NSF)

1. Measure 3/4" from the ends of tubing (inlet end) and mark with a pencil (Check for roundness, smoothness, cut, nicks, flat spots and sharp edges.)



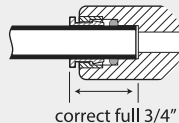
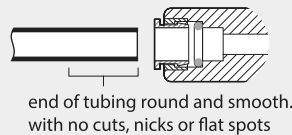
2. Push the tubing firmly into each fitting on the manifold until the line is flush with the Fitting collar. (If the tubing is removed, re-cut the end, measure, mark and re-insert). Tubing must be fully inserted to avoid leaks (To remove tubing, depress and hold white collet; pull tubing out to remove).

4. Pull out slightly on tubing to ensure a good seal. Do no pull too hard or it may damage related parts.

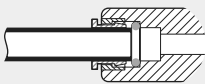
5. Install the other end of the tubing from the inlet side of the manifold to the feed water adapter.

6. Insert plastic tab to ensure quick - connect fitting cannot come undone.

Tubing correctly cut and connected

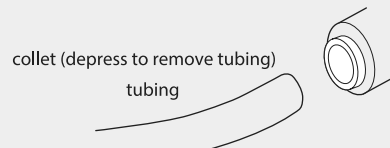


Incorrect partial engagement



To Disconnect Tubing :

1. Remove plastic tab from fitting
2. Push the collet inward and hold with a finger while pulling the tubing out. Make sure the collet is pushed evenly on all sides. If only one side is pushed, the tubing will not be removable.

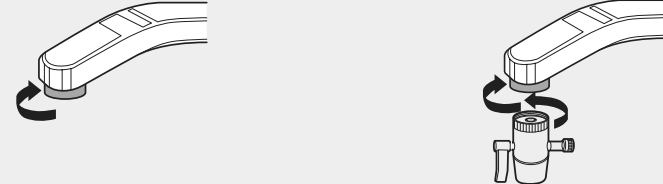


• How to install

Before you begin, close the water supply valve that feeds cold water to your tap. Then, open the faucet to drain the sink's cold water pipe.

Faucet Mounting Installation (Method 1)

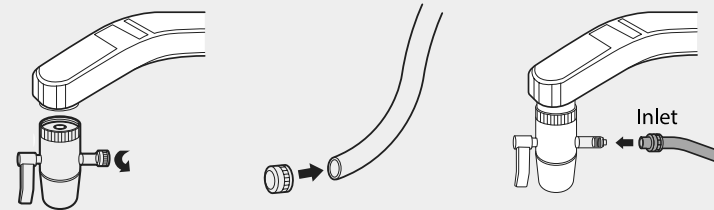
1. Unscrew to remove the aerator (wire screen) and washer from the end of the faucet.



2. Position the diverter valve onto the faucet and hand-tighten the textured collar counterclockwise until secured.

Attaching the Tubing to the Diverter

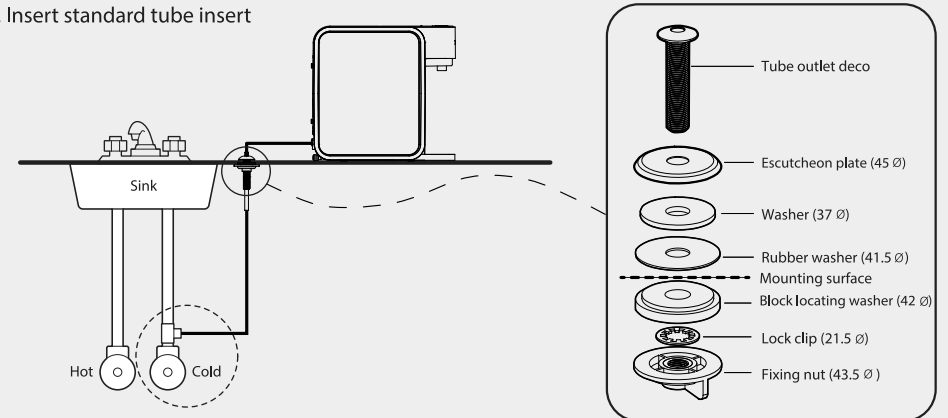
1. Unscrew to remove the textured nuts.
2. With the threads facing out, push the nuts onto the tubes.



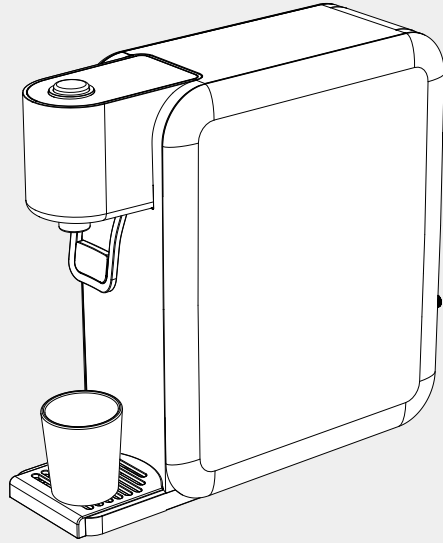
3. Firmly push the tubes onto the barbs.
4. Screw the nuts onto the barbs and hand-tighten.

Tube Outlet Deco Mounting Installation (Method 2)

1. Insert base cover and gasket onto mounting bolt on tube outlet deco.
2. Insert mounting bolt through the drilled hole in the fixture.
3. Place washer and lock washer and fixing nut onto the mounting bolt. Position tube outlet deco on fixture, then tighten nut securely.
4. Insert standard tube insert



• How to use



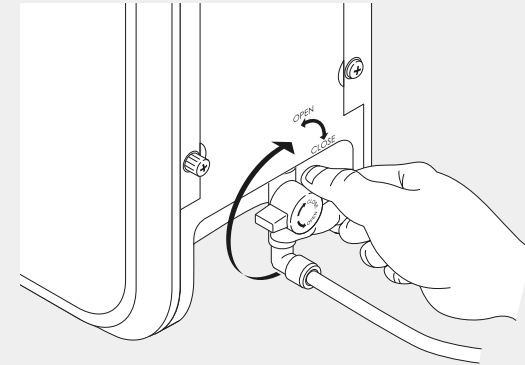
When push dispensing water lever to machine,
Hydrogen-Rich Water comes out from water spigot.



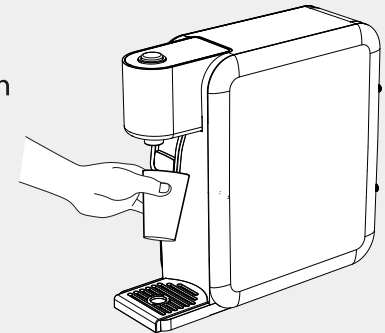
When leave dispensing lever,
water will not come out to water spigot.

• How to replace filter

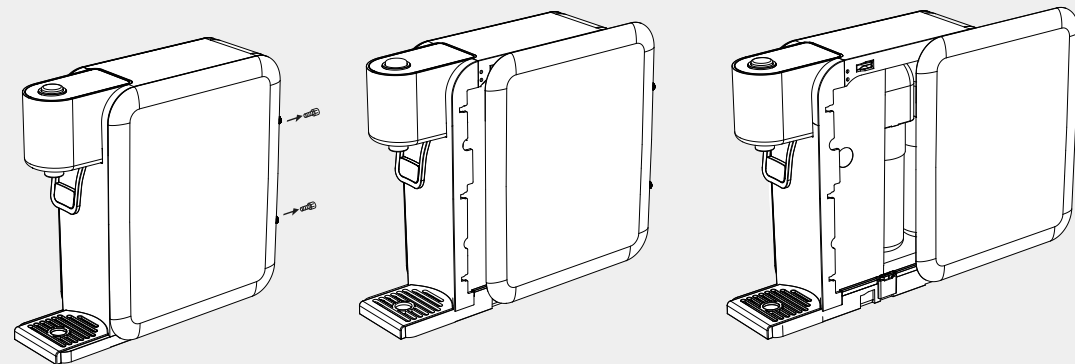
- 1 Shut off the adapter valve and the middle valve.



- 2 Make sure the water has been completely drained from system.

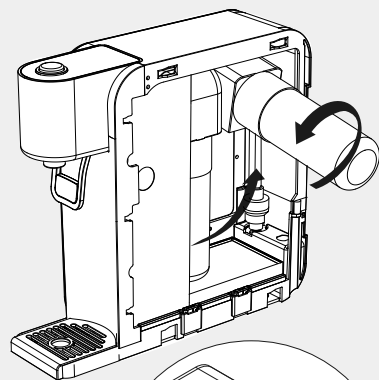
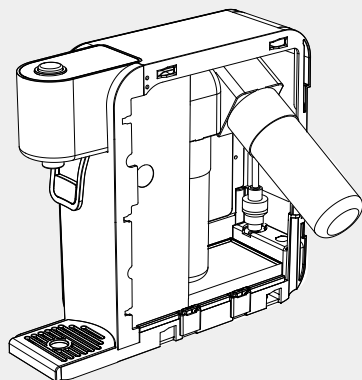


- 3 Remove screw at the rear of unit and slide the right-hand panel to open cover.

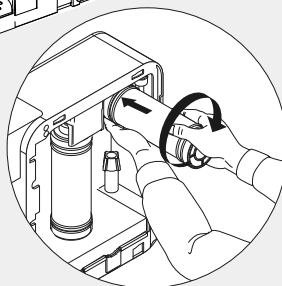


• How to replace filter

- 4 Turn the cartridge to the left (counterclockwise) and pull cartridge straight down to remove it.



- 5 Insert new cartridge and turn right.

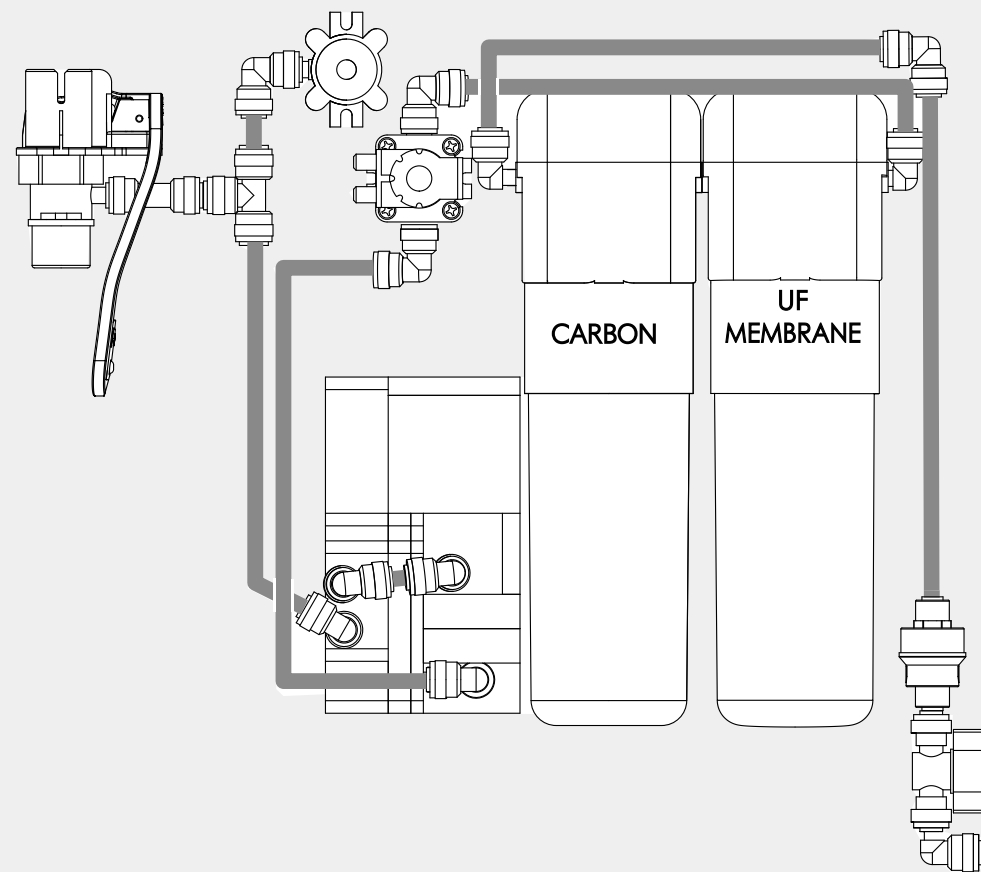


- 6 Slide side panel cover back into place and fasten screw.

- 7 Turn on adapter valve and middle valve.

- 8 Press dispensing lever to flush water and then run water through it for 10 liters.

• Filter Configuration



	Filtration	
	Carbon Filter	UF Membrane Filter
Housing material	polypropylene	
Filter component	Carbon Block	Polysulfone
Capacity(Liter/ Gallon)	1,800L/475 gallons	3,600L/951 gallons
Dimension	67 (φ) × 203 (H)	
Weight	270g/6lb	240g/5lb

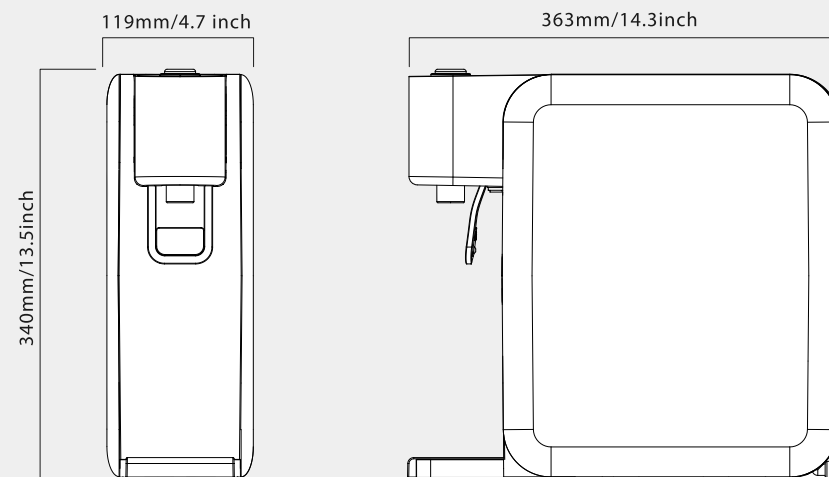
• Trouble Shooting Chart

Check out before requesting help and reporting product failure

※ Before calling customer's support, check the following and if you still need help, please contact Customer support

Symptoms	Causes	Measures to Be Taken
Significantly less water comes out.	Cold water shut off valve Not fully open.	Make sure all shut off valves are fully opened.
	Filter life is ended or filter is clogged.	Replace the filter.
	Power adapter not fully installed.	Make sure power adapter is fully installed in back of electronic module and plug is completely installed in outlet.
No lights in the display.	Damaged Blue LED	It is broken. Contact your dealer or customer support. Without led light, water still comes out from spigot.
	Damaged Switch	Same as above.
	Power adapter not fully installed.	Make sure power adapter is fully installed in back of electronic module and plug is completely installed in outlet.
Significantly less Hydrogen-Rich water comes out.	Filter life is ended or filter is clogged.	Replace filter.
	If water pressure is low.	Check the water pressure and check the tubing Is not crimped or bent?
Water leaks from machine.	Fitting and parts are not firmly connected.	Shut off adapter valve and unplugged. Refer to replace filter and open side panel, Check the leakage point.
	Filter is not sealed properly.	Check where the filter is installed and contact your dealer or customer support.
	If water comes out from O2 outlet hole	Shut off adapter valve and contact your dealer or customer support.
Bubble in the water.	Hydrogen Bubble	Will disappear soon.
	Less drain water when First time use.	Drain 10 liters out from machine.
Strange working sound.	Operating sound, Hydrogen generating sound	This is normal.
Water tastes and smell strange.	Filter life is ended or filter is clogged.	Shut off adapter valve and unplugged. Contact your dealer or customer support.
	Long term unused.	Replace the filter or drain 10 liters out from machine

• Specifications



Direct dispensing Hydrogen-Rich Water Purifier		
Model	Echo NHM-130	
Power Requirement(Volt)	100~240V, DC12V (50/60Hz)	
Power Consumption	65W	
Water Intake	Mechanical	
Filtration System	Quick-Changing Filtration	
Condition of Feed Water	Pressure Limit	0.2MPa~0.4MPa(29psi ~ 58psi)
	Temperature Limit	5 °C ~40 °C (41°F ~ 104°F)
Product Dimension (W x D x H)	119mm(W) X 363mm(D) X 340mm(H) (4.7inch(W) X 14.3inch(D) X 13.5inch(H))	
Product Weight	4.5Kg/9lbs	

• Memo

• Memo