

REPLACING YOUR ECHO FILTER

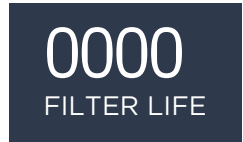
How to Replace the Filter

 **IMPORTANT!** Stop water flow prior to filter replacement.

1. Stop water flow by turning the power switch on the back side of the product to the OFF position.

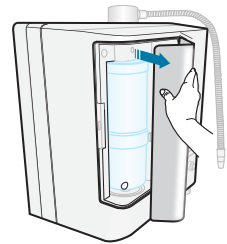
When the digital filter life indicator displays 0000 or you see the flickering filter symbol, it is time to replace your filter.

If you do not replace the filter, the machine will no longer function until you change the filter with a genuine filter.



2. Open the filter door.

Press gently on the indentation on the side of the filter door to open.

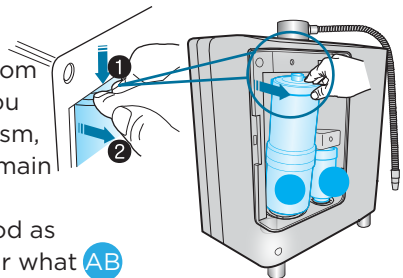


3. Remove the expired filter.

Take hold of the filter securely with your hand, press the top of filter firmly down against the spring-loaded mechanism (Figure 1) to disengage the top of the filter and then pull it toward yourself (Figure 2) and up to remove it.

The upper part of the filter is separated from housing by pressing firmly down. Once you have engaged the spring-loaded mechanism, you can easily remove the filter from the main body by pulling it toward yourself.

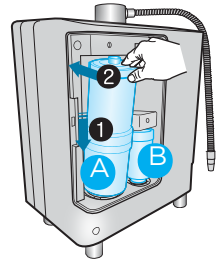
Remove the **B** filter with the same method as above. You may need to use a dull knife or what **AB** a butter knife to press down on the top of the small filter.



4. Insert the new filter into the compartment.

Remove the plastic caps covering both ends of the new **A** filter.

Set the large opening (on the bottom of the filter cartridge) onto the base in the center of the filter cushion. Push the filter down and into the housing compartment, ensuring that the opening at the top of the filter is seated properly into the fitting at the top of the housing.

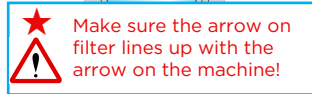
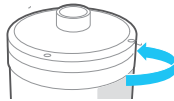


Change the **B** filter with the same method as above.

- A** Replacement Filter (for Echo Ultimate)
- B** Echo Ultimate Secondary Filter

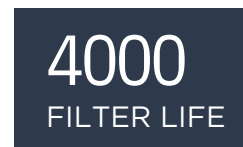
5. Once the new filter is installed, rotate the filter until the arrow on the filter is aligned with the arrow on the machine.

Your Echo® filter is equipped with a genomic chip. This chip communicates with the machine how much water has flowed through the filter.



6. The filter life indicator will automatically reset once the machine detects a new filter present.

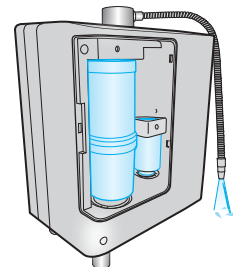
 Check for leaks by running water through your machine before replacing the housing cover.



7. Flush out the carbon dust.

The water flowing through will initially come out discolored (light to charcoal gray) due to carbon particulates in the new filter. It is not harmful.

Allow the water to flow for two to three minutes in the **"Filtered"** mode to flush out all the carbon dust

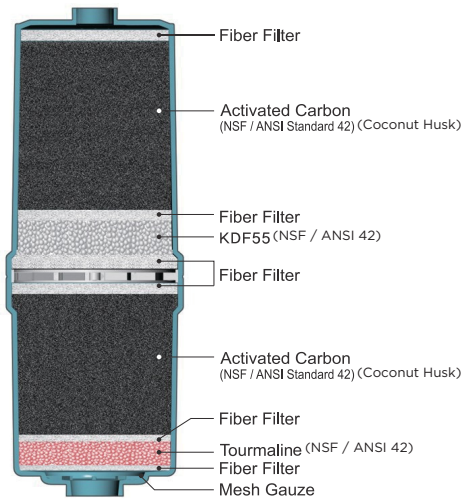


8. Replace the filter door.

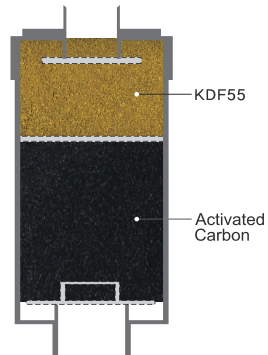
COMPOSITION OF FILTER

High Performance Carbon Filter

Replacement Filter (for Echo Ultimate)



Echo® Ultimate Secondary Filter



Recommended period for changing filter

The effective period of filter use may differ greatly depending on the season, usage, and environment (i.e. water pressure, quality, of source water and, amount of use).



Please replace the filter when prompted by the machine or if any of the following occur:

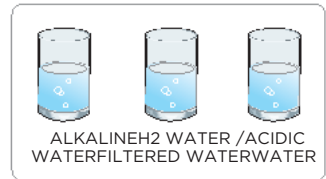
- The water no longer tastes clean.
- Your machine has not been in use for a month or more.

MEASURING THE PH OF WATER

Important Note

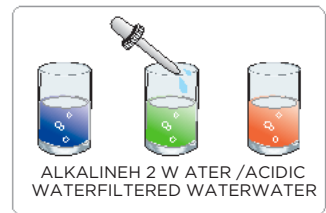
Water quality and mineral content vary greatly in different locations and will directly impact machine performance with respect to pH and hypochlorous acid production.

1. Fill the test container provided about 1/2 full with alkaline, acidic, filtered water or H₂ water.

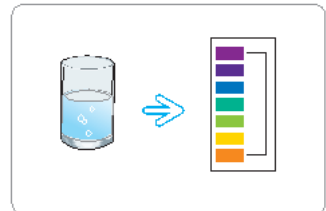


2. Add two or three drops of the pH reagent into the container and stir.

If the reagent and water are not mixed well, an incorrect reading may occur.



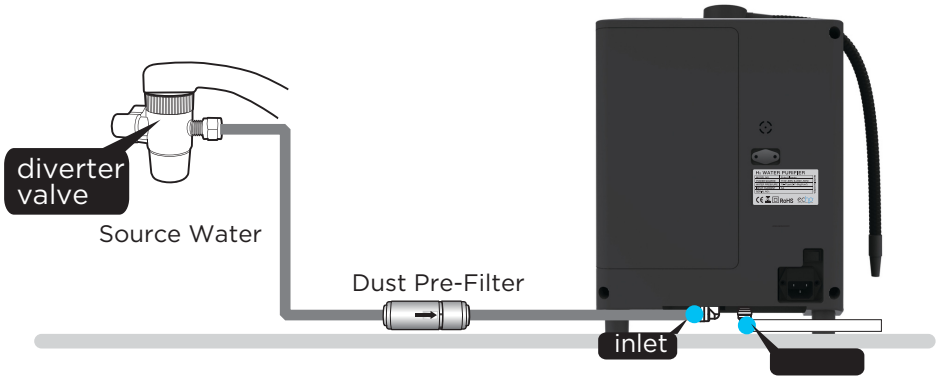
3. The pH value is determined by matching the color of the water to the pH color chart provided. A digital pH meter is more accurate than reagent.



- DO NOT consume water containing pH reagent.
- Keep the pH reagent liquid and color chart away from open flames!
- If the liquid comes in contact with the eyes, flush liberally with fresh water and seek medical help.
- If ingested, induce vomiting, and seek medical help.

COUNTERTOP INSTALLATION INSTRUCTIONS

Connecting to a Standard Faucet



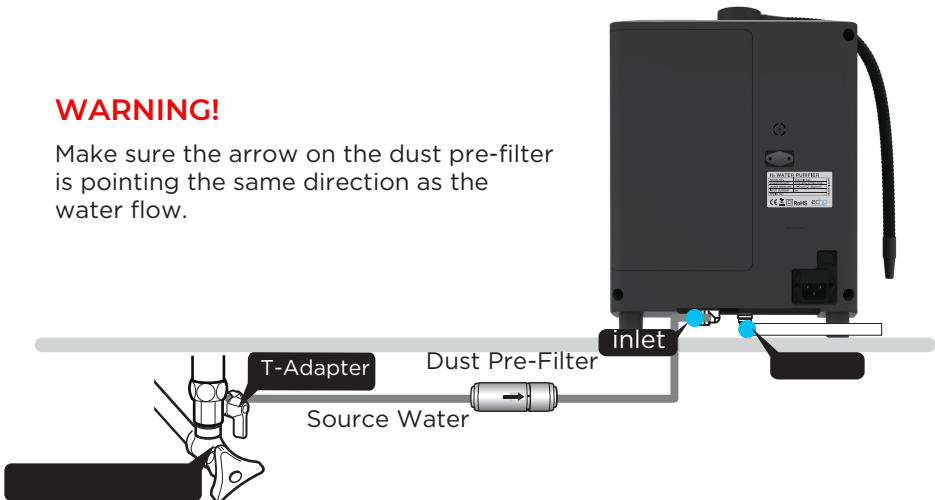
WARNING!

Make sure the arrow on the dust pre-filter is pointing the same direction as the water flow.

Connecting to a Cold Water Valve

WARNING!

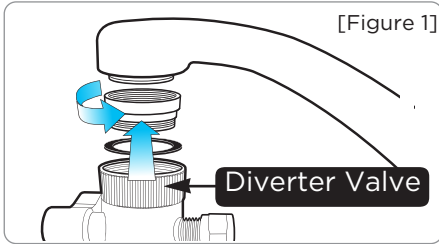
Make sure the arrow on the dust pre-filter is pointing the same direction as the water flow.



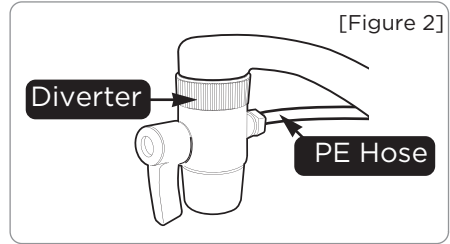
CONNECTING TO A STANDARD FAUCET

Installation Procedure 1

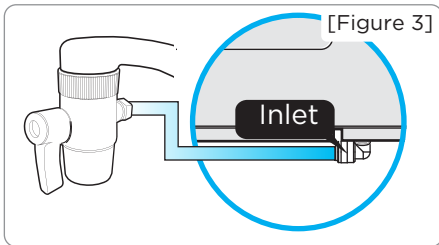
 Before installing, shut off water supply.



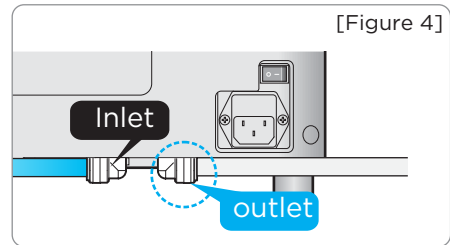
1. Remove aerator from faucet. Attach diverter valve. Use sizing rings and grommet if needed.



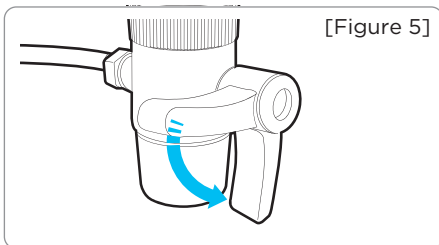
2. Connect 1/4 in. (PE) hose to the diverter in "Figure 2."



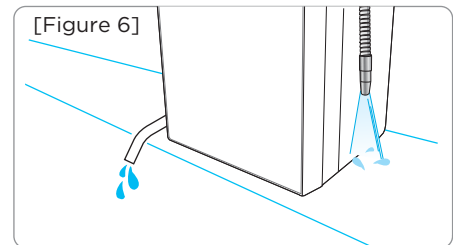
3. Push the 1/4 in. (PE) hose all the way into the water inlet at the bottom of the machine.



4. Connect the stainless steel acid line to the acidic outlet and allow it to drain into your sink.




5. After finishing the connection of "Figure 4," open the water supply valve and adjust the water pressure.

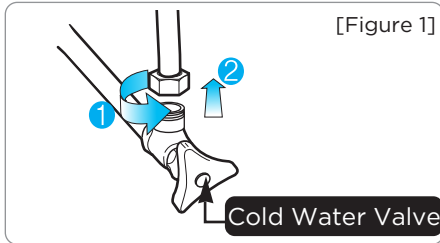


6. Check for leaks on all connections after installation is complete.

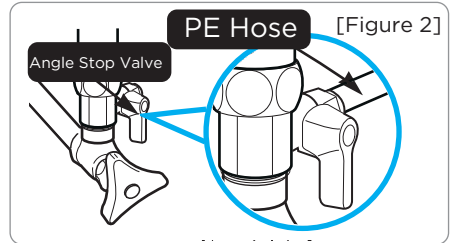
CONNECTING TO UNDERCOUNTER WATER LINE

Installation Procedure 2

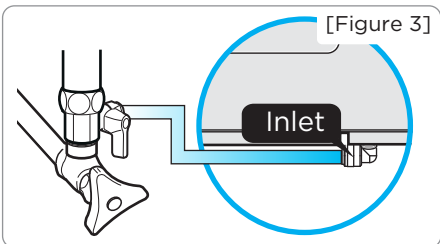
 Before installing, shut off water supply.



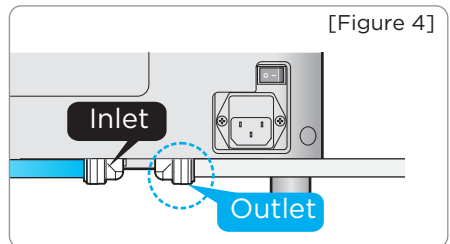
1. Loosen the nut of the cold water valve.



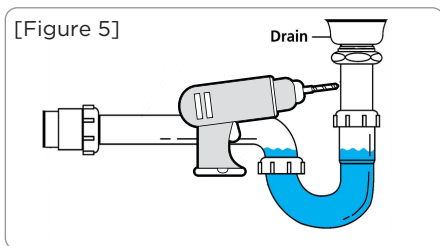
2. Connect 1/4 in. (PE) hose to the t-adapter in "Figure 2."



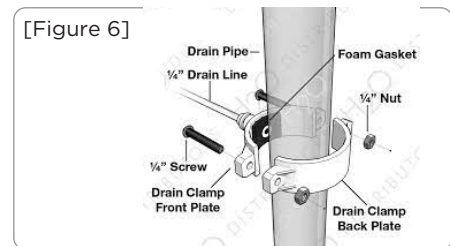
3. Push the 1/4in.(PE) hose all the way in the water inlet at the bottom of the machine.



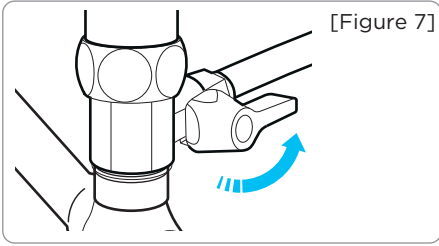
4. Connect one end of the 1/4in tubing to acidic outlet and the opposite end to drain saddle.



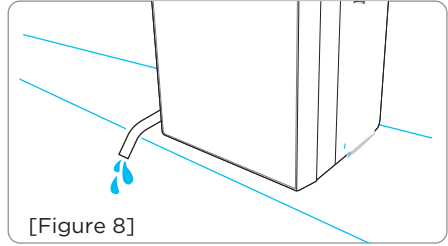
5. Choose where the drain clamp will be installed and drill a 1/4inch. hole.



6. Insert the foam padding to the inside of the Drain clamp, around the hole. Apply the drain clamp to the drain pipe using the included nuts and bolts.

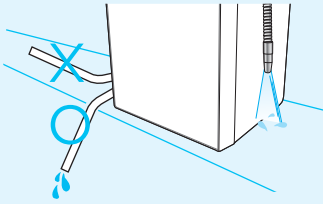


7. After finishing the connection of step 6, open the water supply valve and adjust the water pressure.

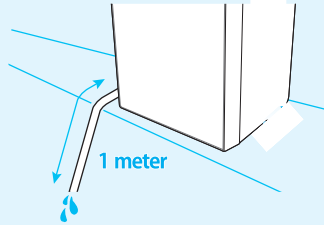


8. Check for leaks on all connections after installation is complete.

 **CAUTION**



Acidic water tubing must not be raised higher than the base of the product.



The outlet hose should not be longer than **1 meter**.

 **CAUTION**

When using a reverse osmosis filter with your Echo Ultimate, verify that the RO storage tank pressure is 11 to 13 psi.

You will also need to remineralize the water to have at least 50 to 100 TDS in the water for optimum performance.

You can purchase a TDS meter at a reasonable price.

Accessories



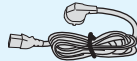
Water Spout



Elbow



Teflon Tape



AC Cord



Fitting Spanner



Diverter Valve



Manual



1/4 in. Water Source Hose (250 cm)



1/4 in. Water Outlet Hose (120 cm)



Dust Pre-Filter



Color Chart



pH Test Kit

PRODUCT SPECIFICATIONS

Product Manufacture Permission Number	No. 610 by KFDA (Ministry of Food and Drug Safety)
Feature	Hydrogen/Ion Water Generator
Model	Echo Ultimate
INPUT Voltage	AC 110V ~ 240V, 50Hz-60Hz
Power Supply	SMPS
Power Consumption	Max 420W
Overall Dimension	10 3/8 x 8 7/16 x 14 5/8 (L x W x H) inches, 263.525 X 214.3125 X 371.475 (L x W x H) mm
Applicable Water Inflow Pressure	10-71psi / 0.7-5Kgf/cm ²
Applicable Water Temperature	41-86°F / 5°C-29°C
Unit Operation Type	One Touch Automated Start
Electrolysis Method	Continuous Electrolysis / Proprefary Hydrogen Module
Electrodes in Alkaline/ Acid (Chamber)	5 Layers of Platinum Over Titanium, 9 Electrodes
Electrodes in Hydrogen Module	2 Electrodes Platinum Coated
Electrolysis Capacity	DARC system (3.5L/min. at 49.8 psi)
Electrolysis Setting	H2 Water / Alkaline (4 levels) / Acidic (4 levels)
Automatic Cleaning	Patented Anti-Sealing Technology Reverse Polarity Every Use.
pH Value	pH 4.0(±0.5)-11.5(±0.5)
Filter Replacement	Easily Replaceable Cartridge
Filter Composition	Activated Carbon, KDF55, Tourmaline
Filter Life	1056 gal./4000L
Filter Life Indicator	LCD Graphic Display, Voice Prompt

TROUBLESHOOTING GUIDE

Abnormal Condition	Cause(s)	Resolution
The Function Display Panel does not come on.	The power plug is not properly inserted, or it is inserted into a faulty outlet.	Properly insert power plug into a correctly functioning power outlet.
	The fuse is blown. The fuse is not inserted properly.	Replace the fuse. A spare fuse is located in the rear-panel fuse holder. (5A / 250V fuse)
pH test shows alkaline water color as neutral (7) while acidic water color gets yellow (6). This is normal	Faulty or evaporated reagent: alkaline / acidity are always produced in inverse proportions. Therefore, showing an acidic color means inversely that alkaline water has to be generated from the unit. Lack of alkaline color can result from a chemical reaction where carbonic acid in water evaporates some test reagent elements.	Test pH value on level 3 or 4 water: replace reagent. Test TDS of source water. The optimal TDS is 75-150 ppm.
Power supply is suddenly cut o while operating the unit.	Elevated level of salt in the water or high TDS, extended operation at high pH, or sudden change in electrical current. In these cases, your machine will shut down automatically to protect the electrodes and circuitry.	Wait — the unit will become operational again after about one hour. Your machine has a safety mechanism built in to protect the electrodes and circuitry. This mechanism will shut the machine down automatically. This mechanism protects the unit from damage or excessive electric current.
Low output of alkaline water from the unit.	Filter is clogged. Premature clogging may be caused by sudden drop in water quality and high level of sediment or other contaminants, which clog the filter.	Replace your filter or clean dust pre-filter. There may be calcium buildup in the top spout. Clean the machine with the cleaning cartridge. Call customer support to order a new filter and cleaning cartridge.
	Low pressure in your household plumbing.	Ensure water supply valves are fully open. The water pressure in the house may be too low.
	The input hose is bent, kinked, or otherwise restricted.	Straighten any bent hose.

TROUBLESHOOTING GUIDE

Abnormal Condition	Cause(s)	Resolution
The Function Display Panel / display indicators do not come on even after turning the tap on.	Faulty PCB (Printed Circuit Board)	Immediately unplug the unit and contact customer service to arrange service.
Strange smell from alkaline water.	Expired filter from ordinary use or premature clogging due to contaminants in water quality.	Replace your filter.
	Sudden change in water quality with elevated level of sulfur (not chlorine). Elevated sulfur levels are observed in some areas during summer months. These levels fall within safe drinking water standards, yet will cause a reaction with electrolyzed water, causing a sulfur smell.	Select lower pH level (1-2). If still present, filter replacement may be necessary.
Alkaline water appears murky; (white, snow-like particles in the bottom of your glass).	You have high hardness (primarily calcium) in your water. The white is extracted CaCO ₃ (calcium carbonate). After CO ₂ in water is bonded with Ca where elevated levels of CO ₃ exist in your water. In water where elevated levels of CO ₃ exist, what you see after electrolysis is calcium carbonate.	This is calcium and is harmless. You can lower the alkaline setting to 1 or 2. Lower the voltage to the electrodes. Typically, this only occurs in extremely hard water. You can also add a softening pre-filter.
At first no smell, but then smell from the alkaline water about one hour after.	Your water bottle needs cleaning. Expired filter. Dishwasher detergent is embedding itself in the bottle's materials.	Clean your bottle or container. Select lower pH level (1-2). Replace your filter. Change dishwasher detergent brand.
Water leakage from the filter cartridge housing.	Filter not installed correctly into filter housing.	Remove your filter and reinstall it, properly following the filter replacement instructions. Increase the quantity of source water inflow.
No acid water flow from the bottom water outlet.	Bottom water outlet hose is bent, kinked, or otherwise restricted.	Straighten the bent hose. Increase water flow from supply.



ECHO TECHNOLOGIES

1 855-737-1114
support@echoh2o.com
echoh2o.com